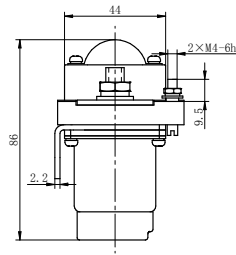
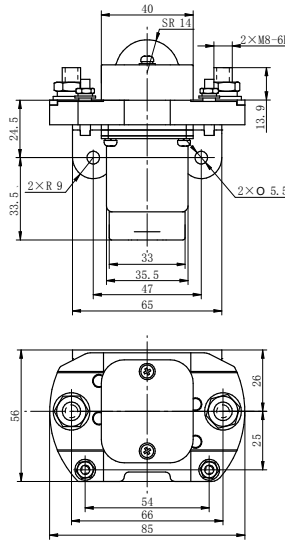


# MZJ-200 Series DC contactor

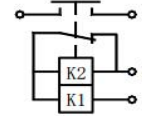


| Size (mm) | Deviation (mm) |
|-----------|----------------|
| 0~30      | ±0.3           |
| 30~60     | ±0.5           |
| >60       | ±1             |

## Application

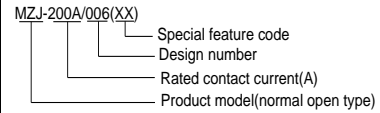
For Electric Control System Of Communication Power Supply, Engineering Machine, Electro-motion Forklift, Motor Car, Train and UPS etc.

## Circuit Diagram



| TY NO        | Rated voltage | pick-up voltage | Release voltage | peak voltage | COIL RESISTANCE |
|--------------|---------------|-----------------|-----------------|--------------|-----------------|
| MZJ-200A/003 | 40V           | ≤28V            | ≥3.2V           | 50V          | 125.6Ω          |
| MZJ-200A/004 | 48V           | ≤33V            | ≥4V             | 55V          | 217.6Ω          |
| MZJ-200A/005 | 96V           | ≤67V            | ≥7.6V           | 110V         | 915.4Ω          |
| MZJ-200A/006 | 24V           | ≤16.8V          | ≥2V             | 30V          | 68Ω             |

## Nomination (nomogram)



## Outline Dimensions

L(mm)×W(mm)×D(mm):85×56×86

## Contact Parameter

|                       |                     |
|-----------------------|---------------------|
| Contact Arrangement   | SPNO                |
| Contact Volt Dro      | ≤80mV               |
| Contact Material      | Silver copper alloy |
| Contact Load          | 200A 48V DC         |
|                       | 200A 60V DC         |
|                       | 180A 72V DC         |
| Max.switching voltage | 72V DC              |
| Max.switching current | 200A                |
| Machine Life(min)     | 100000 Ops          |
| Electric Life(min)    | 10000 Ops           |

## Performance Parameter

|                       |                    |               |
|-----------------------|--------------------|---------------|
| Insulation Resistance | ≥50MΩ(500V DC)     |               |
| Dielectric Strength   | Coil & contact     | 1000V AC 1min |
|                       | Open contact       | 1000V AC 1min |
| Pick up time          | ≤30ms              |               |
| Release time          | ≤30ms              |               |
| Ambient Temperature   | -40℃~+70℃          |               |
| Shock                 | Operating limit    | 10G           |
|                       | Damage limit       | 100G          |
| Vibration             | 10Hz~50Hz 1.5mm DA |               |
| Termination           | Terminal           |               |
| Mounting location     | Optional           |               |
| Remarks               |                    |               |

